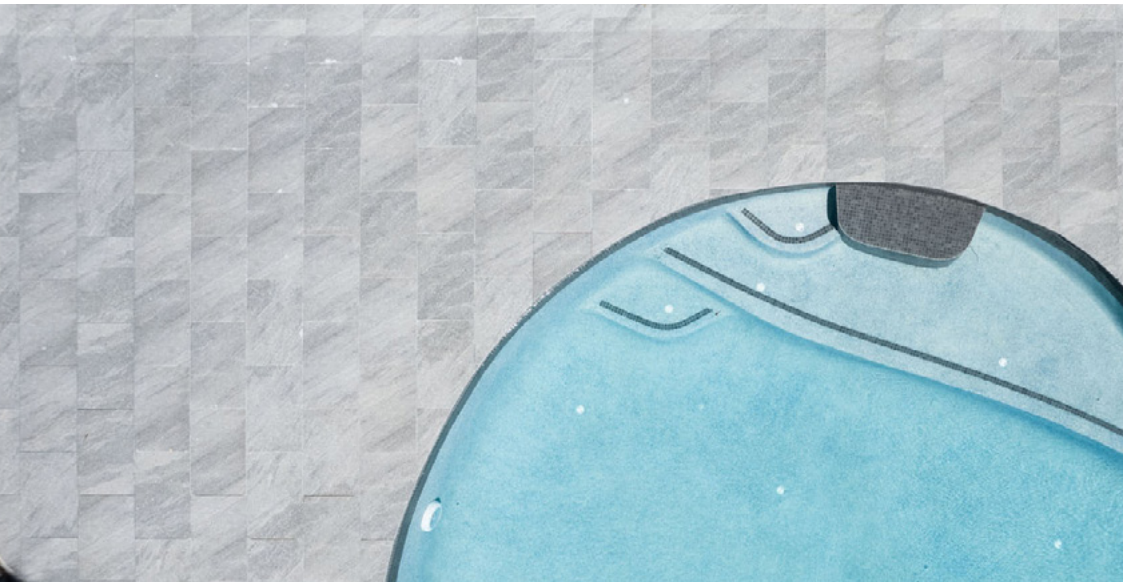


# Cosmos Granito



## Tile Sizes

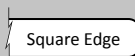


400x400x20mm

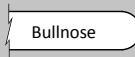


600x400x20mm

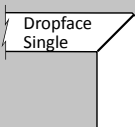
## Coping Profiles



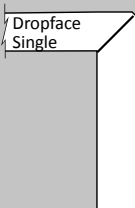
400x400x20mm\*  
600x400x20mm\*



400x400x20mm\*  
600x400x20mm\*



400x400x60/20mm\*  
600x400x60/20mm\*



400x400x100/20mm\*  
600x400x100/20mm\*



# Cosmos Granito

## Description

Mid grey and ash grey waves combine with a starry fleck to create an exciting and powerful cool-toned porcelain option. Emulating the mesmerising and multifaceted cosmos, this tile has depth and mystery. Shape your own outdoor odyssey with Cosmos Granito.

## Why choose Cosmos Granito Porcelain?

Cosmos Granito porcelain tiles are hard, dense and durable, making them very resistant to staining. The 'Grip' finish is rated P5 due to the non-slip finish on the tiles, making them ideal for use around swimming pools and outdoor areas. The surface finish is comfortable on the skin and gentle enough for swimming costumes. The depth of colour will retain heat in the sun. The tiles are accurately sized, cut well and are easy to lay.

## Finish

Grip

## Maintenance

Minimal maintenance is required and these tiles do not require sealing. Porcelain's dense surface absorbs very little moisture, so spills that might seep into another material and cause a stain, can easily be wiped up with a damp cloth or hosed off. Cosmos Granito Porcelain generally only needs to be swept and regularly cleaned with water and a mild detergent.

Porcelain tiles do not need sealing due to having little to no porosity. However, some people choose to seal their porcelain, as there is no doubt it makes cleaning easier. Sealing will especially assist with the cleaning of the grout. After sealing their porcelain, some customers have told us that they even vacuum their tiles!! Please ensure you use an appropriate 'porcelain specific' penetrating sealer. We recommend seeking assistance from John from Stone Clean and Seal for advice.

## Slip Rating (Wet Pendulum)

This tile has a P5 slip rating in the (V) pendulum classification which is the highest wet pendulum rating available under the current standards. (For pool surrounds, a minimum of P4 is required.)



**The  
Pool Tile  
Company**

[pooltile.com.au](http://pooltile.com.au)

**Brisbane Showroom**  
7 Westringia Road,  
Brisbane Airport QLD 4008  
P: (07) 3854 0462  
E: [info@pooltile.com.au](mailto:info@pooltile.com.au)

**Sydney Showroom**  
5/145 Arthur St, ,  
Homebush West, NSW, 2140  
P: (02) 9145 6966  
E: [sydneyshowroom@pooltile.com.au](mailto:sydneyshowroom@pooltile.com.au)

**Melbourne Showroom**  
79 Bazalgette Crescent,  
Dandenong South VIC 3175  
P: (03) 9798 2631  
E: [melbourneshowroom@pooltile.com.au](mailto:melbourneshowroom@pooltile.com.au)